



## *Texas A&M International University*

*A Hybrid Approach to deliver a  
Dual Degree MBA Program*



**Division of International Programs**

[www.tamiu.edu/dip](http://www.tamiu.edu/dip)

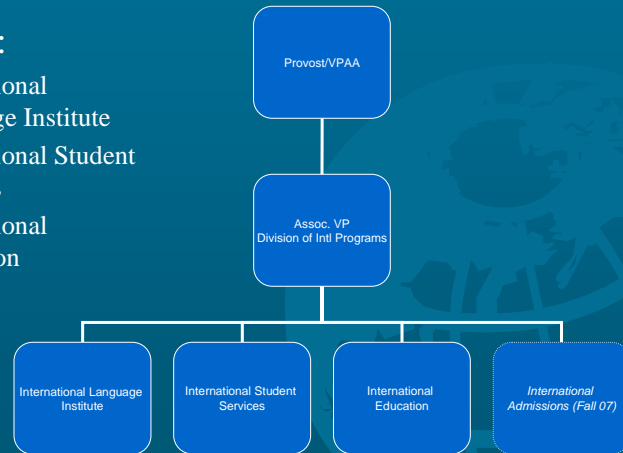
## Texas A&M International University



- Regional university in Laredo, TX on U.S.-Mexico border in bilingual community
- Member of the A&M System
- 5,000 student body, 1<sup>st</sup> generation students, 89% Hispanic
- Colleges/Schools: Arts & Sciences, Business, Education, Nursing
- 51 Undergraduate programs, 33 Graduate programs, 1 Doctoral program (International Business Administration), 1 Collaborative Doctoral program (Hispanic Studies)

## Division of International Programs

- Established in 2004
- Three units:
  - International Language Institute
  - International Student Services
  - International Education



Page 3

CONAHEC - North American Higher Education Conference

## Division of International Programs

- International Language Institute
  - ESL courses
  - ESL Program in Nuevo Laredo, Mexico
  - Spanish for Faculty
  - Foreign Languages (Arabic, Italian, Japanese, Mandarin Chinese, Spanish)



Page 4

CONAHEC - North American Higher Education Conference

## Division of International Programs



- International Student Services
  - Maintain compliance with Federal Visa and Immigration guidelines
  - Foreign student services (orientation, advisement, social activities)
  - Passport Application Center

Page 5

CONAHEC - North American Higher Education Conference

## Division of International Programs

- International Education
  - Study Abroad
  - Incoming Foreign Exchange Students
  - Coordinate Faculty-Led Programs
  - Campus Internationalization



Page 6

CONAHEC - North American Higher Education Conference

## Campus Internationalization

- TAMIU's 7<sup>th</sup> Strategic Goal
- DIP Strategic Plan
  - Faculty Expertise International Database Survey
  - International Development Fund
  - International Research and Teaching Award
  - Certificate in International Studies

## Campus Internationalization

### DIP Strategic Plan



- Curriculum Internationalization
- International Programs Advisory Committee
- International Agreements (3 Africa, 9 Asia, 7 Europe, 23 Americas)
- Executive MBA, Joint-degree Programs

## College-wide Initiatives

- College of Arts & Sciences
  - Fulbright Language Teaching Assistant (Arabic)
- College of Business Administration
  - Joint Degree Programs
    - Exec-MBA Mexico
    - Exec-MBA Egypt
    - Exec-MBA China

Page 9

CONAHEC - North American Higher Education Conference

## College-wide Initiatives

- College of Education
  - Korean Teacher of English Program
- School of Nursing
  - Faculty Exchange (Univ. Autónoma de San Luis Potosi)

Page 10

CONAHEC - North American Higher Education Conference