



**CONAHEC Conference: October 2005**  
**San Juan, Puerto Rico**



**OPERATIONALIZING  
INTERNATIONAL ACADEMIC  
MOBILITY**

Lorna Smith, Director

International Education

Mount Royal College, Calgary, Alberta, Canada





# INTERNATIONAL ACADEMIC MOBILITY PROGRAMS 1995 - 2005

## Lessons Learned





# IAM EXPERIENCE (1995 – 2005)

## 5 North American, 4 European Projects

### NAMP

### Canada - EU



**1996** Participation in 1<sup>st</sup> consortium (Business Administration/ Environmental Science)

**2003** Participation in 1<sup>st</sup> Canada – EU program (Computer Science)

**1998** Participation in 2<sup>nd</sup> consortium (Computer Science)

**2004** Participation in 2<sup>nd</sup> Canada – EU Program (Nursing)

**2000** Participation in 3<sup>rd</sup> consortium (Interior Design/Architecture)

**2005** Participation in 3<sup>rd</sup>. And 4<sup>th</sup> consortia (Environmental Sciences ; Journalism/Public Relations)

**2000** Participation in 4<sup>th</sup> and 5<sup>th</sup> consortium (Journalism and Ecotourism)







# CHOOSING YOUR PARTNER: External

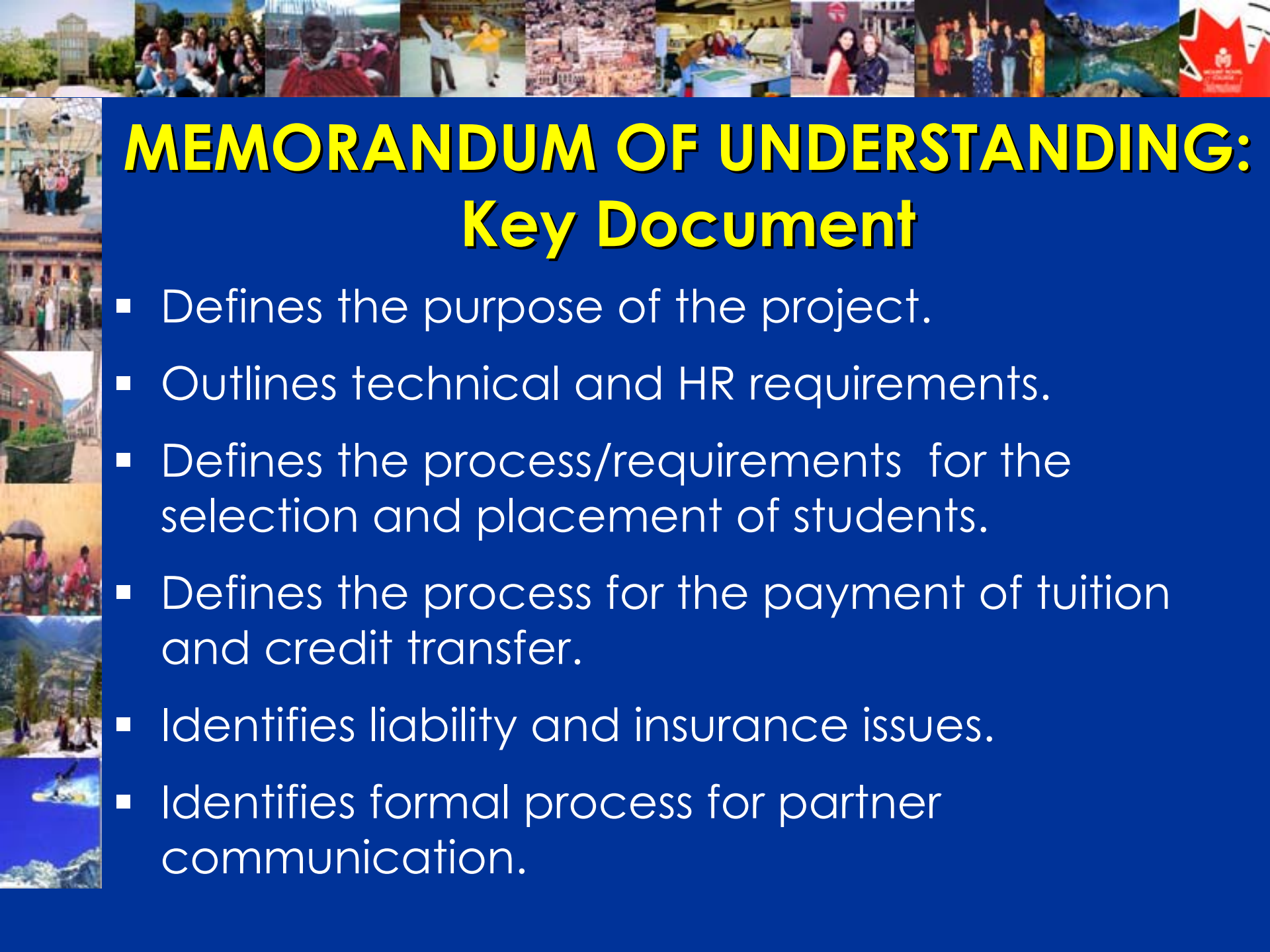
- Participation in networks such as CONAHEC.
- Develop project around one “niche” program, where faculty are likely to already have some international professional contacts.
- Let the lead partners in each country recommend the other “in-country” partners.



# CHOOSING YOUR PARTNER: Internal

- Institutional strategy for internationalization.
- Joint venture between academic areas and the Office of International Education.
- Niche programs...faculty “content experts” prepare the core proposal.
- International Education office takes care of the logistics: preparation of the MOU, budget, reports etc.





# MEMORANDUM OF UNDERSTANDING: Key Document

- Defines the purpose of the project.
- Outlines technical and HR requirements.
- Defines the process/requirements for the selection and placement of students.
- Defines the process for the payment of tuition and credit transfer.
- Identifies liability and insurance issues.
- Identifies formal process for partner communication.





- Ensures that approvals are in place from the top down: President, VP Academic, Chairs.
- Ensures that faculty/academic departments/students understand the process for credit transfer , recruitment of students and financial issues.
- Defines roles and responsibilities both inter and intra institutional.
- Defines the plan for action in a realistic fashion after the faculty study tour and visits to the partner institutions.

# PROMOTION AND COMMUNICATION

Blackboard: Courses - Netscape

File Edit View Go Communicator Help

Back Forward Reload Home Search Netscape Print Security Shop Stop

Bookmarks Location: [http://courseware.mtroyal.ab.ca/bin/common/course.pl?course\\_id=1131\\_1&frame=top](http://courseware.mtroyal.ab.ca/bin/common/course.pl?course_id=1131_1&frame=top) What's Related

Instant Message WebMail Radio People Download Yellow Pages Calendar Channels Amazon.com Than Medieval Source RealPlayer

Mount Royal Courses Academic Web Resources Home Help Logout

COURSES > CODE-2002

**Announcements**

Announcements Information Faculty Information Communication Virtual Chat Discussion Board Groups External Links User Tools Resources Course Map Control Panel

**ODE**  
CONSORTIUM ON DESIGN EDUCATION  
Consortio en Educación de Diseño

VIEW TODAY VIEW LAST 7 DAYS VIEW LAST 30 DAYS VIEW ALL

**October 1 - 8, 2002**

**Tue, Oct 08, 2002 -- How to find the 2002 Project Statement**  
El Proyecto que se desarrollará en la Repentina 2002, está disponible desde ahora en el área de "Information". Por favor entren a ésta área, donde aparecen tanto la versión en Español como en Inglés.

Los equipos de trabajo estarán disponibles a partir del Martes 8 de octubre, por lo que los alumnos podrán empezar a interactuar a partir de esta misma semana.

Nos vemos en ésta experiencia Internacional programada los días 24 y 25 de Octubre!

The design statement for Repentina 2002 is now available through going to "Information". Please go to this area, and the English and Spanish versions of the design problem are listed.

Posted by Carmina Barroso García

Document: Done

Start Blackboard: Courses ... Re: NAESC Website - Lot... Acrobat Reader - [Calgary... Blackboard 5 - Netscape

1:45 PM







- Offer made and acceptance in writing by students.
- Statement from Chair/Registrar of course equivalencies and transfer approval.
- Course selection sent to host institution for approval.



# SELECTION OF STUDENTS: International Education

- Students meet individually with IE Coordinator to discuss :
  - travel planning
  - logistics for registration;
  - housing;
  - immigration;
  - risk and liability











# INNOVATIVE TRILATERAL PROGRAMS

- Create **common accreditation** to enhance professional and academic mobility.
- Provide **experiential learning** opportunities in a cross-cultural context.
- Provide experience working on **international teams** – face-to-face and technologically.
- Add **value** to students' **academic record**.
- Provide opportunities for **work placements**, site visits, internships.
- **Enhance employment** opportunities.



# DEVELOPING & IMPLEMENTING A SUCCESSFUL IAM PROGRAM CAN BE:

- HR intensive
- Time consuming
  - Nerve-wracking
    - Not financially lucrative





# IS IT WORTH IT?

i Sí, como no !

Oui, bien sûr!

Yes, absolutely!

